

Live Model Books

Art Models 6

The Female Figure in
Shadow and Light




Includes full rotations
plus alternate views

Maurice and Douglas Johnson

Art Models 6

The Female Figure in *Shadow and Light*





Copyright © 2011 Maureen Johnson and Douglas Johnson. All rights reserved. **No part of this publication may be reproduced or transmitted in any form or by any means, electronic or mechanical, including photocopy, recording or any other information storage and retrieval system, without prior permission in writing from the publisher.** However, we encourage you to create original artwork using these photos as a reference. See “Royalty Free,” below, for details.

Published by
Live Model Books LLC
215 South Broadway
Box 128
Salem, New Hampshire 03079.

Formats

ISBN-13: 978-0-9816249-7-6 Hard Cover with Disk
ISBN-13: 978-0-9816249-8-3 ebook

Printed in Korea

Royalty Free

The photos in this book and disk may be used for games, videos, and digital art if first manipulated in a substantive way, for example, as the basis for a wireframe mesh, skin, or texture. However, they may NOT, in whole or in part, be resold, repackaged and sold, nor given away.

The photos may also be used as a reference for creating traditional art which may then be sold. For example, a drawing, painting, or sculpture is permissible under these guidelines whereas a work which uses the actual photos, such as a collage, would be prohibited. If you have any questions, please contact us at contact@livemodelbooks.com.

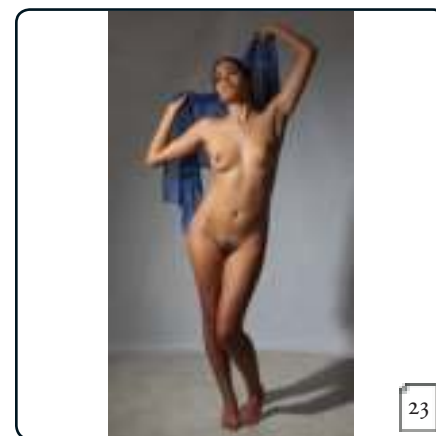
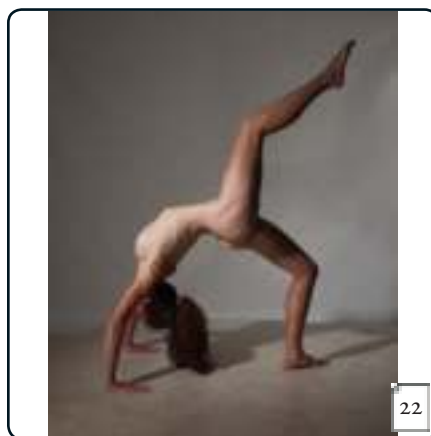
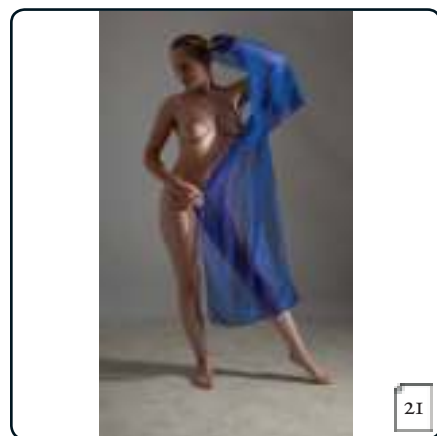
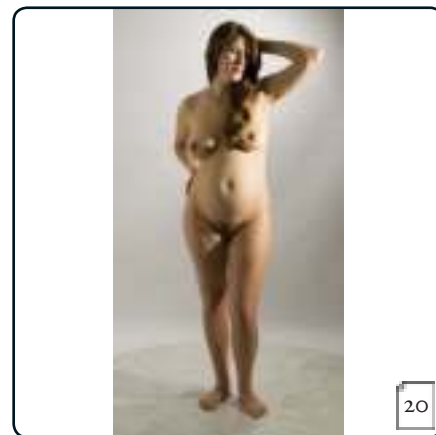
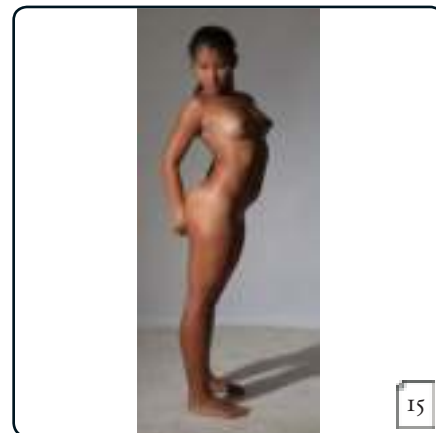
For the latest poses, please visit us on the web
<http://www.livemodelbooks.com/>



Contents

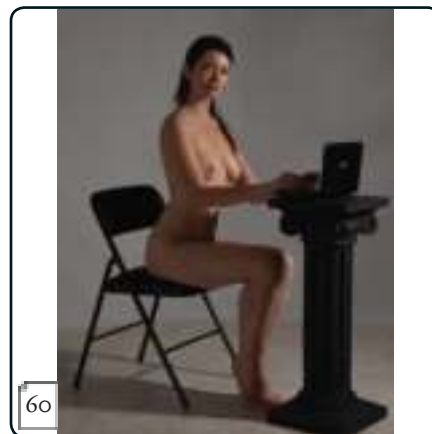
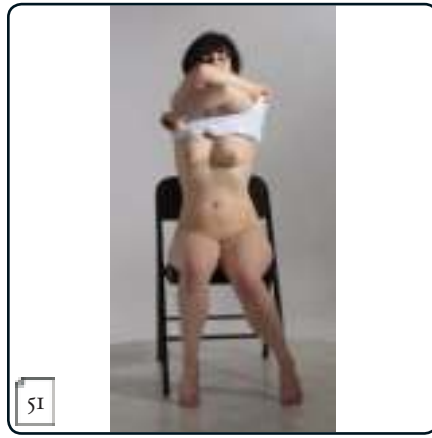
- 12 Introduction
- 14 Pose Photographs
- 119 Expressions and Head Details
- 127 Index

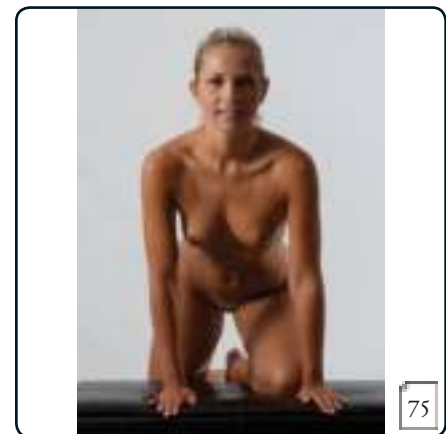
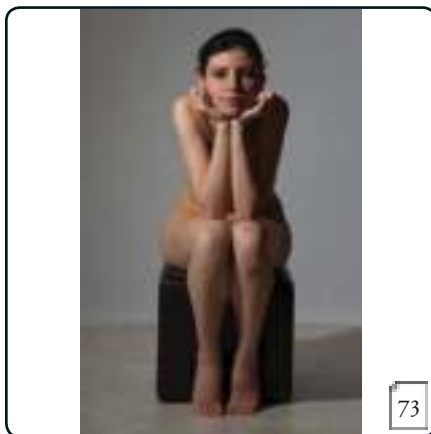
To find poses on the disk, look up the pose's page number in the index.





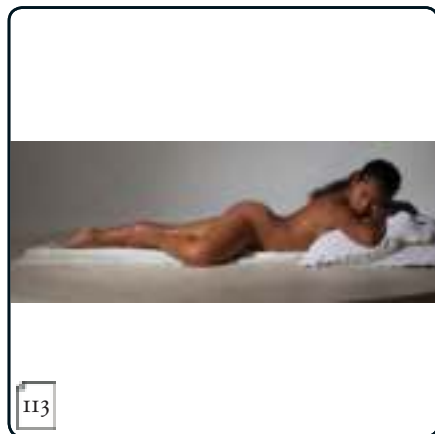
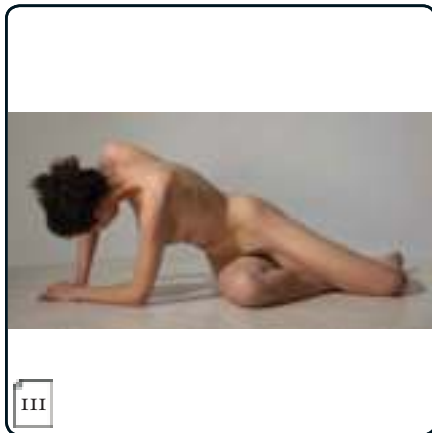
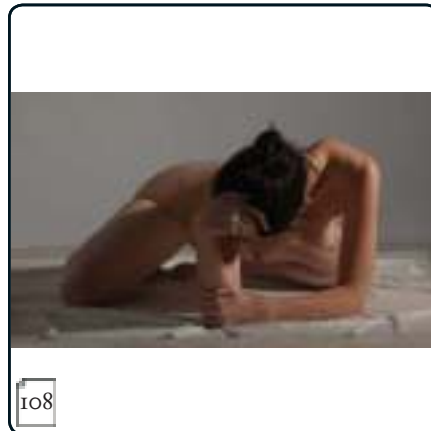














Expressions

And More . . .

The Companion Disk contains the full rotation—24 high-resolution photos—of every pose, plus bonus views such as over-heads and close-ups for some poses. Even for poses that do not have dedicated close-ups, the photos on Disk are large enough that you can zoom in for details. Well over 2,500 full-size high resolutions photos can be found on the included Companion Disk. Please take a look!

On the Web

If you don't see what you are looking for here, please visit our website where you will find a variety of styles and **many male models**. If you want more of any particular style, lighting, or model you can find individual poses or large collections of poses at a discount.

Please stop by and browse the extensive catalog at www.posespace.com.

Introduction

In this book we have changed the layout somewhat from previous editions. We are printing two views per pose instead of four, allowing us to include twice as many poses.

We have also started photographing close-up details of each model and have printed some of those close-ups in the book.

Because that process had just started at the time of this printing, not every model has these detailed views. Other changes, as reflected by the new subtitle, are a focus on richly-shadowed high-contrast light and only female models (male models are available from our website). Please let us know what you think of these changes by writing to us at contact@livemodelbooks.com.

Facing Page

Top:

New close-up photos provide exceptional detail. Eight poses have detail views—by the models Ginger, JenB, Lexi, Mandy and Paris.

Bottom:

The photos shown on the bottom of the opposite page are printed in miniature, but all of the actual photos are full size. Some poses have overhead views and detail views, as shown below.



Thumbnails of a full pose, including overheads and details for mandy448 from the Companion Disk.





























































































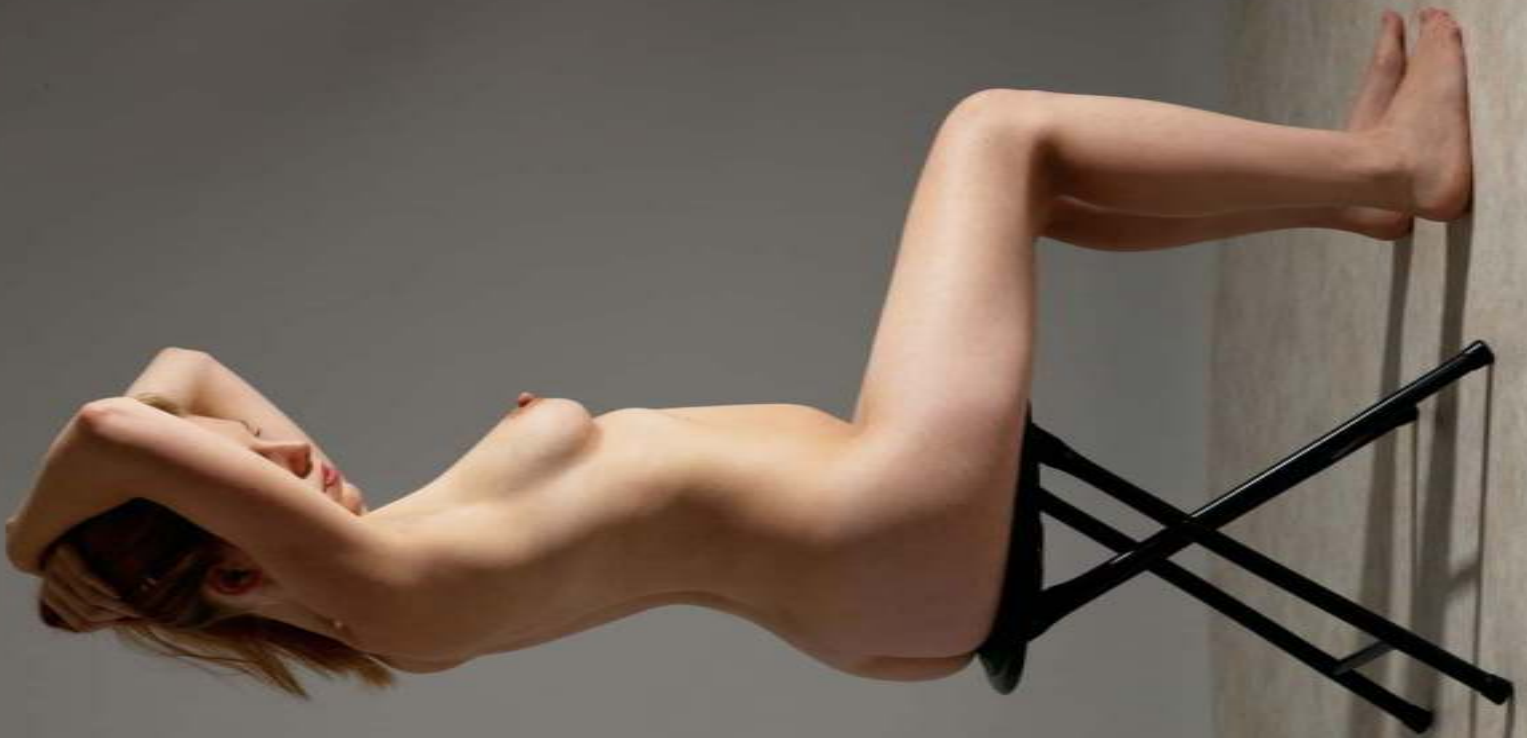
















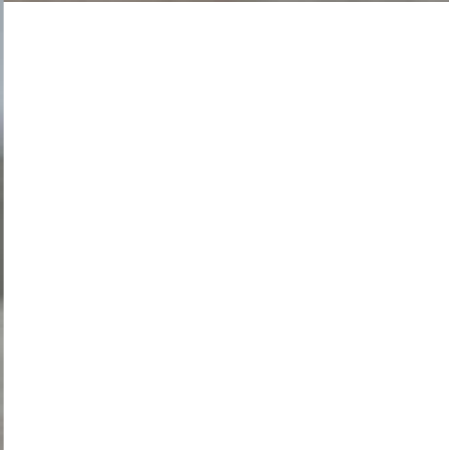








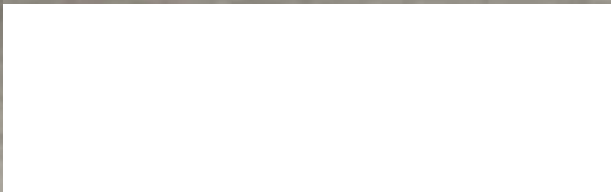


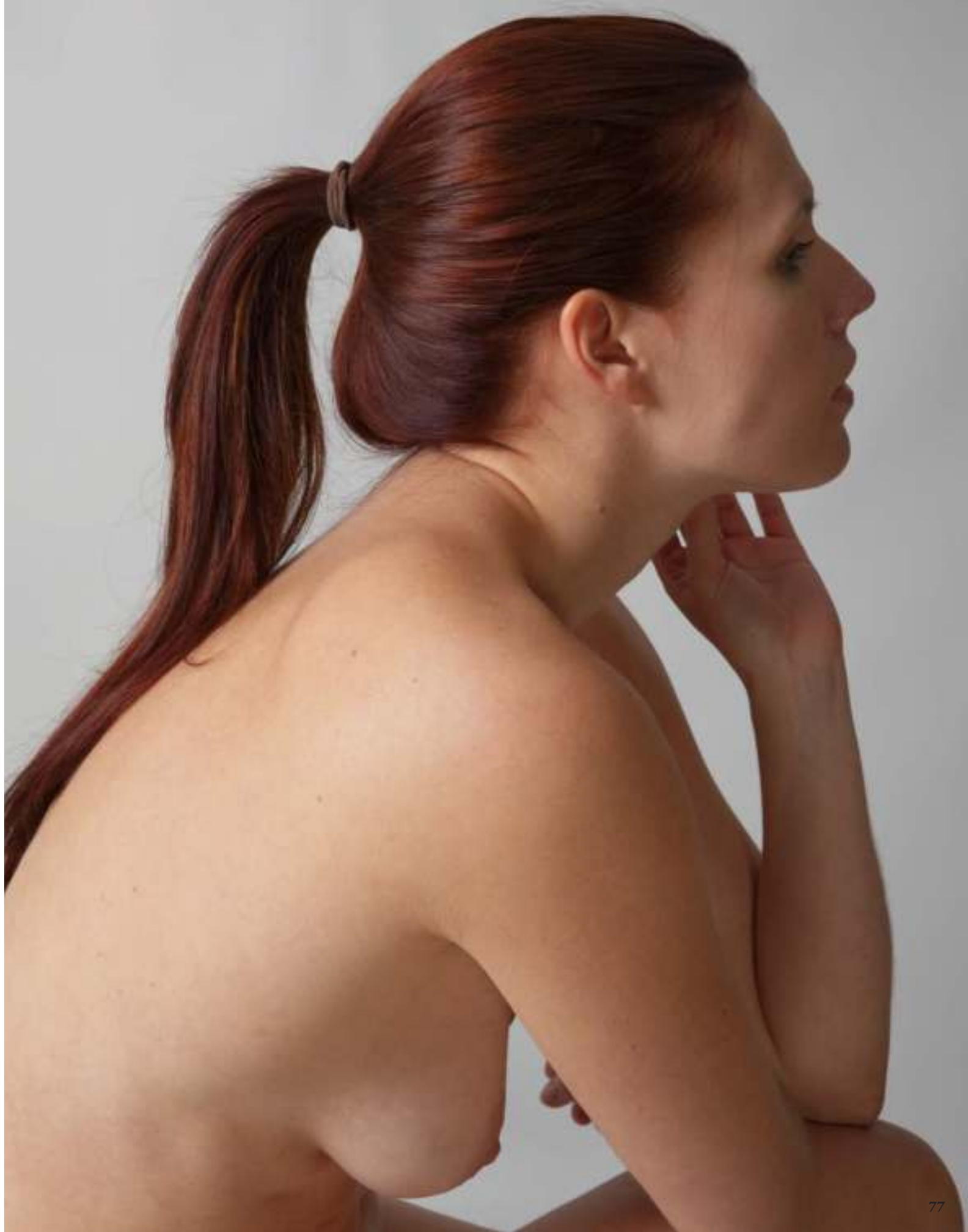
























































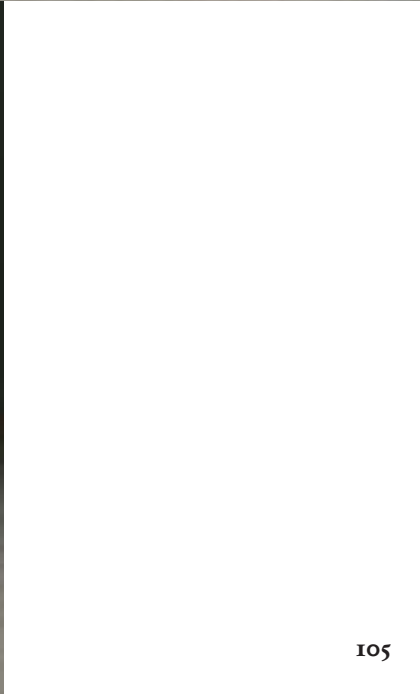






































Expressions and Head Details

















jenbody001_34 from
the jenbody collection
at www.posespace.com

Pose Name Index

This index can be used to find the name of the poses in the book, which corresponds to a folder on the Companion Disk where the full pose is located. To use the index, simply find the page number for the pose you want to identify then look across to get the pose name. In the case of close-ups, the photos are stored in the same folder as the main pose. For example, paris015 close-ups are located in the paris015 folder on the Companion Disk.

14	mandy418	50	michaela023	86	katja225
15	luana004	51	daphne009	87	michaela035
16	paris015	52	becca321	88	becca213
17	paris015 close-up	53	paris043	89	lexi028
18	jenb401	54	katja221	90	michaela025
19	jenb401 close-up	55	jenni037	91	daphne019
20	carolyne006	56	lexi022	92	becca015
21	ginger006	57	luana023	93	michaela031
22	becca317	58	michaela024	94-95	mandy447
23	jenb406	59	jenni034	96	luana042
24	lexi011	60	mandy429	97	ginger041
25	lexi011 close-up	61	trisha021	98	daphne015
26	mandy407	62	paris044	99	luana044
27	mandy407 close-up	63	luana027	100	luana046
28	katja203	64	ginger045	101	becca352
29	michaela018	65	ginger045 close-up	102	mandy448
30	becca208	66	becca002	103	mandy448 close-up
31	jenb405	67	luana021	104	daphne011
32	paris029	68	mandy432	105	ginger040
33	lexi016	69	katja223	106	luana045
34	katja207	70	paris042	107	trisha026
35	jenb403	71	paris042 close-up	108-109	mandy455
36	carolyne007	72	luana024	110	michaela036
37	paris031	73	trisha023	111	trisha039
38	mandy424	74	luana029	112	trisha036
39	jenb409	75	jenni039	113	luana048
40	katja219	76	lexi017	114	becca354
41	carolyne009	77	lexi017 close-up	115	michaela034
42	jenb411	78	ginger043	116	lexi045
43	mandy415	79	luana028	117	mandy457
44	katja202	80	trisha027	118	michaela027
45	jenb407	81	jenni040	119-121	mandyexpressions
46	ginger012	82	katja226	122	beccaexpressions
47	jenni038	83	lexi025	123	jenbexpressions
48	trisha020	84	becca327	124	parisheadetails
49	mandy458	85	mandy427	125	lexiheadetails

Free Poses

Type this code, AMHC620118A into the form at www.livemodelbooks.com/bonus/

More Art Models

You can ask your bookseller to order Art Models using the product codes below. Or, visit us on the web www.livemodelbooks.com.

Art Models	
Soft cover book	9780976457329
Soft cover book with disk	9780976457336
Companion Disk	9780976457367
Art Models 2	
Hardcover book	9780976457374
Hardcover book with disk	9780976457381
Companion Disk	9780981624907
Art Models 3	
Hardcover book with disk	9780976457336
Companion Disk	9780981624914
Art Models 4	
Hardcover book with disk	9780981624938
Companion Disk	9780981624921
Art Models 5	
Hardcover book with disk	9780981624969
Companion Disk	9780981624952
Art Models 6	
Hardcover book with disk	9780981624976
Companion Disk	9780981624983
Art Models Ultra	
Becca	9780981624990



Books

The Art Models series provides hundreds of poses with a wide variety of models, lighting, and styles. Each book has a different focus, for example *Art Models 2* showcases classically inspired poses; Art Models 5 focuses on dynamic poses, *Art Models 3, 4 and 5* show the favorites chosen by our customers; and the first *Art Models* has a broad selection of poses printed in a smaller format.



The *Art Models Ultra* DVD for PC and Mac was specifically designed for digital artists and provides a thorough study of one complete figure with exceptionally high resolution.



WWW.POSESPACE.COM

FIND NEW MODELS ONLINE

- New models and thousands of poses, many not appearing in any book.
- New poses posted as they are finished.
- Special products not available anywhere else, such as complete photo sessions downloadable or on disk.
- Get instant access to any finished pose in our catalog.
- Discover new and upcoming projects.
- Send us your thoughts, questions and comments with the feedback form.

Visit us on the web at www.posespace.com.

The Female Figure in Shadow and Light

Photos for Figure Drawing, Painting & Sculpting

The *Art Model series* puts a team of professional models on your schedule, whenever and wherever you need them. This collection of full-color high-resolution photos of the nude human form enables meaningful work or practice even when a live model is not available—a valuable addition to any figurative artist's library!

Benefits

- Front and side views in the book plus 24 views on disk allow you to choose the best angle for your project.
- Take all the time you need to try new techniques or experiment with new media and hone your skills.
- Study the human form in the comfort of your own home and on your schedule.
- Always get your choice of pose and view.
- See details closer than you would in person with the photos on the Companion Disk.
- Great value at less than the cost of one modeling session.

Find exactly the right pose, get just the right view, and never be without a model again.

Companion Disk

- See the poses in 360-degree surround view, with 24 photos per pose as shown below. Some poses include extreme closeups and many have overhead views.
- Zoom in on eyes & ears, fingers and toes and any area requiring a closer look.
- Project the photos for yourself or for a group or display in High Definition.
- Print exactly the view you want and take it anywhere.
- Create meshes and textures.

From planning compositions to completing the finest details, *Art Models* is the valued resource you will turn to time and again as you develop your art and hone your skills.

PHOTOGRAPHED IN ROTATION



New Models and New High-Contrast Light!

Discover new poses and models at
www.PoseSpace.com